

DREDGING NOTICE
U.S. ARMY CORPS OF ENGINEERS
ST. PAUL DISTRICT

NOTICE DATE: September 9 th , 2019	DREDGING CATEGORY: Imminent
MEETING DATE: If requested	MEETING TIME:
BOAT REQUIREMENT:	MEETING LOCATION:
DREDGE CUT NAME: Petersons Bar	RIVER MILE: MN River 11.7 – 12.6

HISTORIC DATA

Frequency: 59%	Avg. Quantity/Job: 18,703 yd ³
Last Date Dredged: Sept. 7 th , 2018	Avg. Quantity/Year: 11,069 yd ³

SURVEY DATA

Date Surveyed: September 4th, 2019
Water Surface Elevation: 689.3
Low Control Pool Elevation: 686.8
Net Difference: +2.5'
5 Day River Forecast: Holding steady

DREDGING DATA

Recommended Channel Width: 100 feet
Recommended Dredging Depth: 11 feet
Estimated Quantity: 26,798 yd³ plus 54 yd³ placement site access
Type of Dredge: Contract Mechanical Plant 2
Proposed Dredging Date: September 9th, 2019
Estimated Duration: 14 dredging days
Justification for Dredging: The navigation channel is closed to the 9.0' contours once the water levels get down to Low Control Pool.

MATERIAL PLACEMENT DATA

Proposed Placement Site: Cargill East River
Location: MN-14.1-RMP
Site Characteristics: This is an upland beneficial use stockpile site provided to the Corps by the Lower MN River Watershed District.

If you have any questions concerning this project or want to request an on-site meeting please call me at (651) 290-5155.

Dan Cottrell
Dredging Manager

MN River, Petersons Bar
River Mile: 11.7 - 12.6
Surveyed: September 4th, 2019
Scale: 1" = 200'

CUT-1

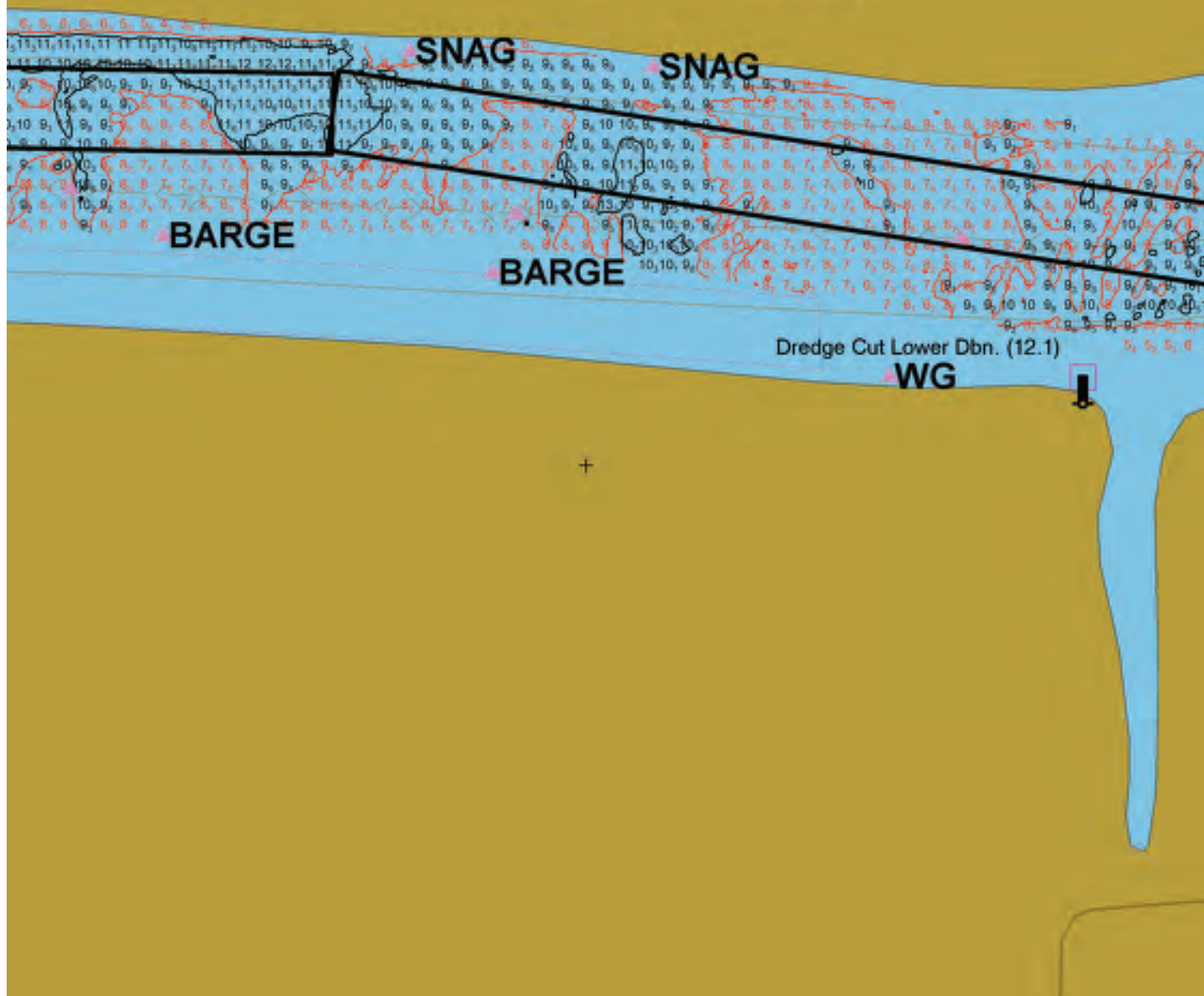
12.5

BARGE

Port Cargill Fleet South

CUT-2

CUT-3



CUT-4

SN

12.00 sm
SNAG

t Lower Dbn. (12.1)

WG



CUT-5

SNAG

SNAG

ROCK SHELF - DO NOT DREDGE

+

MN River, Cargill East River
Placement Site Access
River Mile: 13.9 - 14.1
Surveyed: September 4th, 2019
Scale: 1" = 100'

ACCESS CUT

SNAG
CENTER

17₄ 17₅ 18₃ 18₃
15₃ 15₂ 15₂ 16 16₂ 17 18₃ 1400 sm
13₆ 13₅ 14 15₄ 15₇ 15₆ 16₄ 16₂ 16₇ 16₉
12₅ 12₃ 13₄ 14₁ 14₁ 14₁ 15 15₆ 15₇ 15₅ 16₁
12₅ 11₇ 11₇ 12₃ 12₄ 13₅ 13₇ 14₂ 14₅ 14₆ 14₇ 14₈ 15₅
11₆ 11 10₅ 11₆ 11₃ 11₉ 12₈ 13₃ 13₅ 13₇ 13₈ 13₆ 14₅ 15₂ 17₂
11₂ 10₃ 11₁ 10₂ 8₄ 10₃ 10₃ 11 11₈ 12₅ 13₂ 13₁ 13 13₆ 13₉ 14₈ 16₅
8₅ 9₅ 9₇ 9₈ 9₇ 9₄ 10₁ 10₁ 11₁ 11₈ 12₆ 13₂ 12₇ 13₂ 13₄ 14₉ 16₈
8₁ 8₃ 8₃ 7₈ 8₄ 9 8₇ 9₂ 9₈ 10 11₄ 12₁ 12₆ 12₉ 13₁ 14₁ 15 16₆
8₅ 8₆ 8₆ 8₄ 8₃ 8₉ 9₁ 9₆ 10₆ 11₁ 12₂ 12₇ 13₈ 14₅ 15₁ 16₄
4₉ 5₃ 6₃ 7₆ 8₄ 8₄ 8₈ 8₈ 9₅ 10 10₈ 11₆ 12₄ 13₉ 15₃ 15₇ 16₂
3₈ 5 5₄ 6₄ 7₇ 7₈ 8₃ 9₃ 9₉ 11₂ 11₅ 12₆ 13₉ 15₇ 15₉
0₆ 1₂ 2₅ 3₇ 3₉ 4₆ 5₅ 6₇ 7₈ 8₆ 9₇ 10₆ 11₅ 12₆ 14₇ 15₂
0₆ 1₂ 2₅ 3₇ 3₉ 4₆ 5₅ 6₇ 7₈ 8₆ 9₇ 10₆ 11₅ 12₆ 13₉
0₆ 1₂ 2₅ 3₇ 3₉ 4₆ 5₅ 6₇ 7₈ 8₆ 9₇ 10₆ 11₅ 12₆ 13₉
1₈ 3 3₂ 4₄

+